

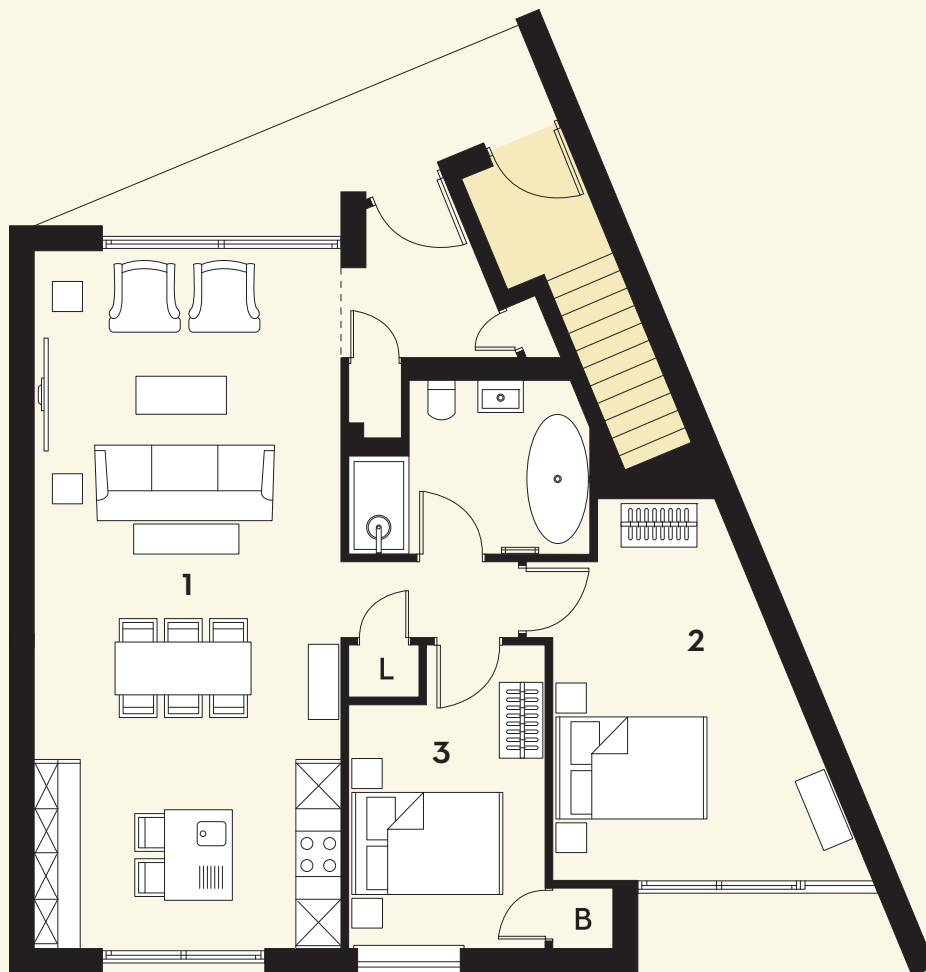
GROUND FLOOR

1. Living - 30'3 x 13'4 - 9.23m x 4.06m

2. Bedroom 1 - 16'7 x 11'8 - 5.05m x 3.57m

3. Bedroom 2 - 10'7 x 8'10 - 3.22m x 2.6m

Layouts are indicative only and may be subject to change; all measurements are approximate; any furniture (including wardrobes) is for illustration purposes and is not included in any sale.



Plots 1, 3 & 5
2 Bedroom Flats

ARBOR VALE

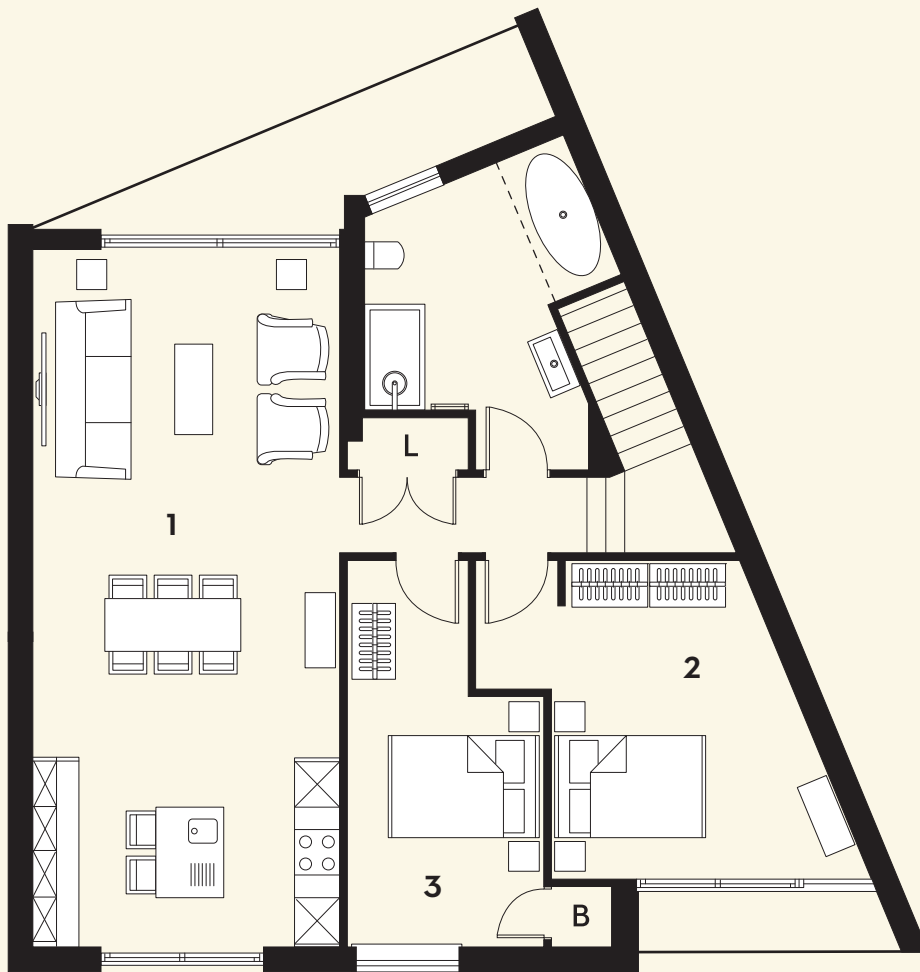
FIRST FLOOR

1. Living - 30'3 x 13'4 - 9.23m x 4.06m

2. Bedroom 1 - 13'10 x 11'8 - 4.23m x 3.57m

3. Bedroom 2 - 10'10 x 8'6 - 3.31m x 2.6m

Layouts are indicative only and may be subject to change; all measurements are approximate; any furniture (including wardrobes) is for illustration purposes and is not included in any sale.



Plots 2, 4 & 6
2 Bedroom Flats

ARBOR VALE