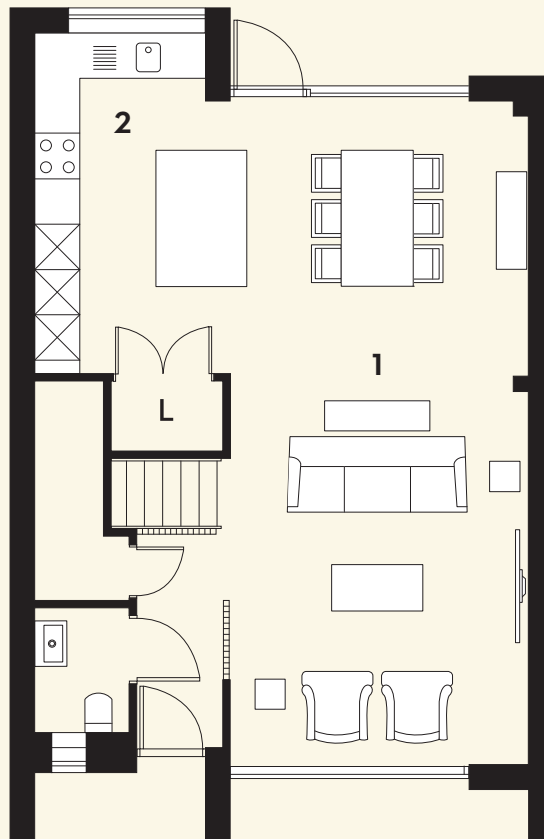


GROUND FLOOR

1. Living - 28'10 x 12'11 - 8.78m x 3.94m

2. Kitchen - 14'10 x 8'6 - 4.51m x 2.59m

Layouts are indicative only and may be subject to change; all measurements are approximate; any furniture (including wardrobes) is for illustration purposes and is not included in any sale.



Plots 20 to 24
4 Bedroom Houses

ARBOR VALE

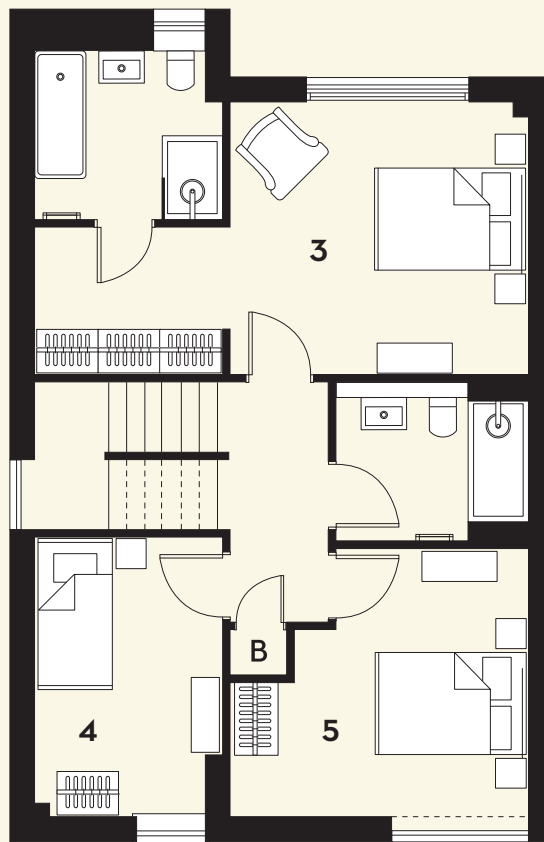
FIRST FLOOR

3. *Bedroom 1* - 11'10" x 12'11" - 3.61m x 3.94m

4. *Bedroom 2* - 12'2" x 8'2" - 3.7m x 2.49m

5. *Bedroom 3* - 11'8" x 12'11" - 3.55m x 3.94m

Layouts are indicative only and may be subject to change; all measurements are approximate; any furniture (including wardrobes) is for illustration purposes and is not included in any sale.



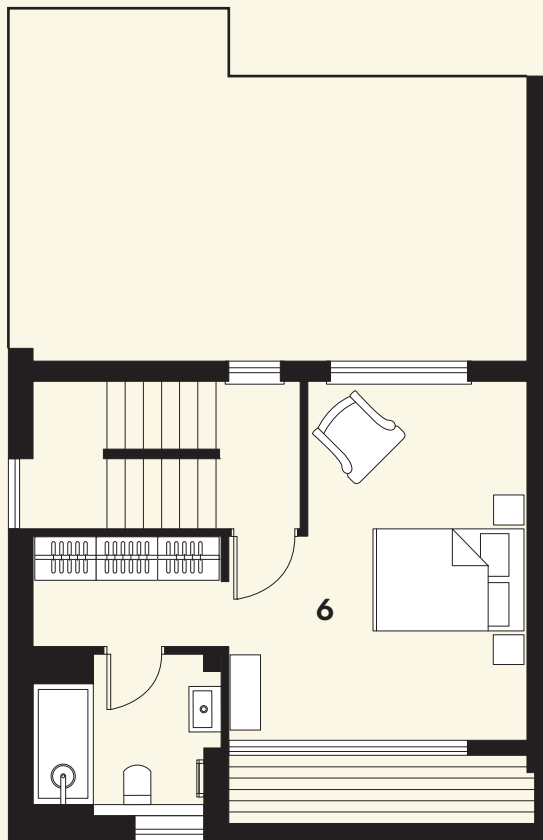
Plots 20 to 24
4 Bedroom Houses

ARBOR VALE

SECOND FLOOR

6. Bedroom 4 - 15'7 x 13'0 - 4.75m x 3.95m

Layouts are indicative only and may be subject to change; all measurements are approximate; any furniture (including wardrobes) is for illustration purposes and is not included in any sale.



Plots 20 to 24
4 Bedroom Houses

ARBOR VALE